



Optimization of Medium Components Using Artificial Neural Networks

Mohamad Hosein Aghajani^{1*}, Hemat Aghagolzadeh haji², Mostafa Mir³, Mahdi Aghajani^{4**}

¹ Dept. of Nanotechnology, The Persian Gulf Nuclear Medicine Research Center, The Persian Gulf Biomedical Sciences Institute, Bushehr University of Medical Sciences, Bushehr, Iran.

² School of Medicine, Shahroud University of Medical Sciences, Shahroud, Iran.

³ Research Committee, Babol University of Medical Sciences, Iran.

⁴ School of Advanced Medical Technology, Golestan University of Medical Sciences, Gorgan, Iran.

Received: 10 October 2016

Accepted: 30 November 2016

Abstract

Background: Achieving high cell density is an important goal in recombinant proteins production. Optimization of medium components to achieve high cell density and consequently high yield recombinant protein is a common practice in the biotechnology industry. We could not find an article that just examine the effects of salt on growth transformed BL21. On the other hand, salt is a critical component of medium that can be made up in a medium optimization.

Methods: Here, we separately investigated effect of K₂HPO₄, MgSO₄, (NH₄)₂SO₄ and NH₄CL on maximum growth of bacteria BL21 after transforming BL21 with PET-32a that containing para thyroid hormones gene. Then, the salts were combined and added to the culture medium for optimization of their effects on high cell density using artificial neural network modelling (ANNs).

Results: After ANN modeling, the obtained model showed that MgSO₄ has dominant on high cell density other than salts if final concentration of MgSO₄ is 25mg/ml. The best concentration each of salt be lower 30 mg/ml and critical total concentration of slats is 120 mg/ml that inhibitory effect was seen after a critical concentration.

Conclusions: In current study, ANN modeling shows that in prediction of effects of salts (i.e. K₂HPO₄, MgSO₄, (NH₄)₂SO₄ and NH₄CL) on cell density to reach high cell density, is effective and efficient.

Keywords: High cell density, Artificial neural networks, Culture medium, Optimization.

*Corresponding to: MH Aghajani, Email: Aghajani_1365@yahoo.com,

**Corresponding to: M Aghajani, Email: m.aghajani@bpums.tums.ac.ir

Please cite this paper as: Aghajani MH, Aghagolzadeh Haji H, Mir M, Aghajani M. Optimization of medium components using artificial neural networks. Int J Health Stud 2017;3(1):5-13.

information is about expression vectors, production strains, protein folding and fermentation technologies of E. coli.⁸ And more than 30% of approved protein therapeutics are produced in E. coli that indicating it is a major workhorse for recombinant therapeutic production.^{9,10} The components used to cultivate E. coli usually included several essential resources such as a carbon, nitrogen, essential salts and trace elements.¹¹ There are three types of media: defined, semi-defined and complex. Semi-defined media are generally used to obtain high cell-density.¹² Defined medium is composed of chemicals of known identities and concentrations, while other medium composition is not completely known.¹³ Some nutrients, including carbon and nitrogen sources, can inhibit cell growth when they are present above a certain concentration. This explains why just increasing the concentrations of nutrients in batch culture media has not yielded high cell-density.¹⁴ To have high cell growth as well as high recombinant protein production, the concentration of each component in these three different types of media must be carefully formulated. Optimization of medium components for reach high cell density and consequently high yield production is a common practice in the industry.¹⁵ Various technics used to obtain the best formula of medium ingredient, including design of experiments (DOE) to determinate effects of different components and their interactions on cell/protein growth with artificial neural network.^{16,17} We could not find an article that just examine the effects of salt on growth transformed BL21. On the other hand, salt is a critical component of medium that can be made up in a medium optimization.

In this study, we evaluate the effect of several salt on cell density of transformed BL21 separately and then combine the salts and add to medium. To determinate the effects of interaction of salts (input experimental parameters) on BL21 growth (high cell density) as output parameter, data were optimized using artificial neural networks modeling.¹⁸

Materials and Methods

Monopotassium phosphate (K₂HPO₄), Magnesium sulfate (MgSO₄), and Ammonium sulfate (NH₄)₂SO₄ were purchased from Sigma-Aldrich, USA. Ammonium chloride was purchased from Merck Millipore. The construct was ordered from the genscript (lot: 4194933) and BL21 was provided from Pasteur Institute of Iran.

After culturing BL21 on a plate, a colony of bacteria was placed in 10 ml of medium Loreal Brittany (LB) and grown

Introduction

Biotechnology has many branches, one them is the production of recombinant protein. The recombinant protein has many applications, especially in the medical field.¹ For example, bovine somatotropin is expected to have an annual market of up to 100 tonnes in the USA alone. Recombinant protein production has different and complicated process.^{2,3} The expression of proteins in eukaryotic or prokaryotic host is a way to study of gene function and the production of large amounts of protein in commercial and investigational use. The host has a crucial role in this process. The selection of an appropriate host is dependent on various conditions.^{4,5} More important considerations in the choice of host are ensuring the maximal amount of protein expression and ensure the function and proper folding of protein. Many hosts apply to this field that the most common microorganism is E. coli for recombinant protein production.^{6,7} Because a good and enough

overnight in a shaking incubator at 37 with RPM 180. The culture medium was transferred to a 250 ml erlen containing 50 ml LB that were placed in a shaking incubator (180 rpm) at 37 °C for 4 h until the optical density (OD; represents cell density) is reached in 0.4-0.6 at 600 nm. Then precipitation procedure was performed in 8000 rpm for 5 minutes. Afterwards, vector containing the gene encoding the protein, namely parathyroid, was transformed into bacteria with CaCl₂ procedure. The transformed bacteria were cultured in 250 ml erlen containing 50 ml LB with antibiotic ampicillin to a final concentration of 50 mg per ml. Medium made with 21 different concentrations for each of salts while adjusting the PH range between 5 and 8. After overnight culture, cell density measured by spectrophotometric method. The procedure was performed for each 4 salt. The concentration of the salts is shown in results (Figures 1-4). After viewing effect of each salt on the cell density, this times added different concentrations of salt together in a medium where 49 samples were obtained. All of them were cultured overnight in a shaking incubator (180 rpm) at 37 °C and the cell density (OD) was measured by spectrophotometry.

The modeling relations between independent variables (i.e., MgSO₄, K₂HPO₄, (NH₄)₂SO₄ and NH₄CL concentration) and dependent variable (i.e., OD) was performed using a commercial ANNs software (INForm 4.02, Intelligensys, UK). The response surfaces obtained in form of 3D-graphs were applied to evaluate the change of output variable (OD) against changes of two input variables while two other input variables were fixed at low, mid-range and high values, as was explained previously.¹⁹⁻²¹ Number of 49 experimental samples were prepared with random input values for each sample (i.e. randomly concentration variation of MgSO₄ in the range of 25-500 mg/ml, K₂HPO₄ in the range of 25-1375 mg/ml, (NH₄)₂SO₄ in the range of 25-1250 mg/ml and NH₄CL in the range of 100-1375 mg/ml). The data set of 49 samples with OD as output parameter, were used to train, test and validate a model by ANNs. Here, 39 data sets were applied as training set for teaching the network in order to find the relations between inputs and output. Also, to prevent overtraining process, three data sets as test data set were separated to evaluate software (i.e., 10% of the training data set). The training parameters applied during ANNs modeling are shown in table 1, as details have been described previously.²²

Following network training, 10 remaining data sets with the OD results was employed as unseen data set or validation data for the evaluation generated model by ANN software (table 2). Finally, a better predictability of the generated model was determined using correlation coefficient (R₂) close to one for the unseen data.^{23,24}

In this experiment, to measure cell density, we start with a blank for calibration of spectrophotometer that in deed is a medium free of bacteria. Afterwards, wavelength was set to 600 nm. After reading each of the four samples, to ensure correct procedure of spectrophotometer, the device was calibrated. Samples with cell density higher than 2 were dilution to follow the Beer- Lambert's law.

Table 1. The training parameters applied in Inform v4.02

Network structure	
- No. of hidden layers	1
- No. of nodes in hidden layer	3
Backpropagation type	Standard batch
Back propagation parameters	
- Momentum factor	0.8
- Learning rate	0.7
Targets	
- Maximum iterations	1000
- MS error	0.0001
- Random seed	10000
Smart stop	
- Minimum iterations	20
- Test error weighting	0.1
- Iteration overshoot	200
- Auto weight	On
- Smart stop enabled	On
Transfer function	
- Output	Asymmetric Sigmoid
- Hidden layer	Asymmetric Sigmoid

Results

The impact of each of salts on cell density is shown separately. As figure 1 show, at first with adding NH₄CL increase the cell density but after the concentration of 20 mg/ml not only don't increase cell density but also decrease that. In figure 2, increasing concentration of (NH₄)₂SO₄ quickly decrease cell density after 2.5 mg/ml, because the PH of the medium can be reduced and condition probably for growth is undesirable. As showed in figure 3, the cell density after 25 mg/ml decreases and increasing MgSO₄ do not increase cell density uniformly. The reason for these fluctuations in the chart may be due to aeration. Figure 4 show that increasing K₂HPO₄ initially leads to an increase in high cell density but after concentration 5 mg/ml adding K₂HPO₄ continuously decrease cell density. Subsequence of modeling using ANN software, the model generated R₂ values of 0.73, 0.81 and 0.72 for the training, test and unseen data sets, respectively. These values indicate an acceptable trained model obtained by ANNs study. Then, according to this model, the impact of independent input variables mentioned in current study on the high cell density medium was evaluated. The use of sensitivity analyses approach can be the first choice to determine the relations of independent input variables and dependent output parameter in the optimized model using ANNs modeling.²⁵ Here, we applied a systematic approach reported previously^{21,26} for a semi-quantitative study of relations between the input variables and the output variable. Briefly, in this approach, response surfaces generated by ANNs modeling in form of 3D-graphs are used for the evaluation of the effect of two input variables on output variable, whereas the other input variable(s) are fixed on the predetermined values of low, mid-range and high.

Following the approach mentioned above, in current study, the effect of MgSO₄, K₂HPO₄, NH₄CL and (NH₄)₂SO₄ concentration on OD was evaluated, in which the concentration of two salts was maintained at given values (i.e., high, mid-range and low values) and then impact of concentration of two other salts on OD was studied. Subsequently, the obtained 3D-graphs are illustrated in figure 5-10.

In figure 5, the effect of concentration of MgSO₄ and K₂HPO₄ on the OD is shown, when two other input variables, namely, concentration of NH₄CL and (NH₄)₂SO₄, are fixed at 1372, 950 and 525 mg/ml and 1248, 841 and 433 mg/ml, respectively (i.e., high, mid-range and low values). As shown in Figure 5, increasing K₂HPO₄ after a certain amount, reduced cell density while increasing Mgso₄ increases the cell density. In figure 6, to study the impact of changes in NH₄CL and MgSO₄ concentration on the OD, we fixed concentration of K₂HPO₄ and (NH₄)₂SO₄ at 1372, 925 and 475 mg/ml and 1248, 841 and 433 mg/ml for high, mid-range and low values, respectively. Increasing NH₄CL decreased cell density. This effect more pronounced than the MgSO₄. In figure 7, the effect of MgSO₄ and (NH₄)₂SO₄ concentration on the OD is shown, while two other input parameters are fixed at high, mid-range and low concentrations (i.e., 1372, 950 and 525 mg/ml for NH₄CL, and 1372, 925 and 475 mg/ml for K₂HPO₄). It is

clear that decrease in the OD against increasing concentration of (NH₄)₂SO₄ is further compared with an increase in the concentration of MgSO₄. In figure 8, the effect of two variables, namely concentration of NH₄CL and (NH₄)₂SO₄ is shown on the OD, while two other variables are fixed at their high, mid-range and low values. As shown, an increase in (NH₄)₂SO₄ concentration leads to decreasing cell density slowly, as mentioned above. Also, increasing concentration of NH₄CL results in a reduction of cell density. Of course, this effect is more obvious at the high concentrations of MgSO₄ and K₂HPO₄. In figure 9, with increasing concentration two variable, K₂HPO₄ and NH₄CL concentration, OD decreases at high, mid-range and low concentrations of (NH₄)₂SO₄ and MgSO₄. In figure 10, obviously, the effect of K₂HPO₄ concentration on OD is much at low concentrations of MgSO₄ and NH₄CL, as an increase in K₂HPO₄ concentration considerably reduces OD.

Table 2. Unseen data sets used in artificial neural network software

MgSO ₄ concentration (mg/ml)	K ₂ HPO ₄ concentration (mg/ml)	NH ₄ CL concentration (mg/ml)	(NH ₄) ₂ SO ₄ concentration (mg/ml)	Observed OD	Predicated OD
75	125	1375	250	1.6	1.4
500	500	250	500	3.7	2.1
250	500	1000	750	0.4	0.9
25	250	1000	125	3.3	2.1
75	250	375	250	2.5	3.1
500	250	250	500	3.1	2.5
25	1250	500	25	1.5	1.7
250	1250	1000	75	0.2	0.6
25	750	875	75	1.0	1.7

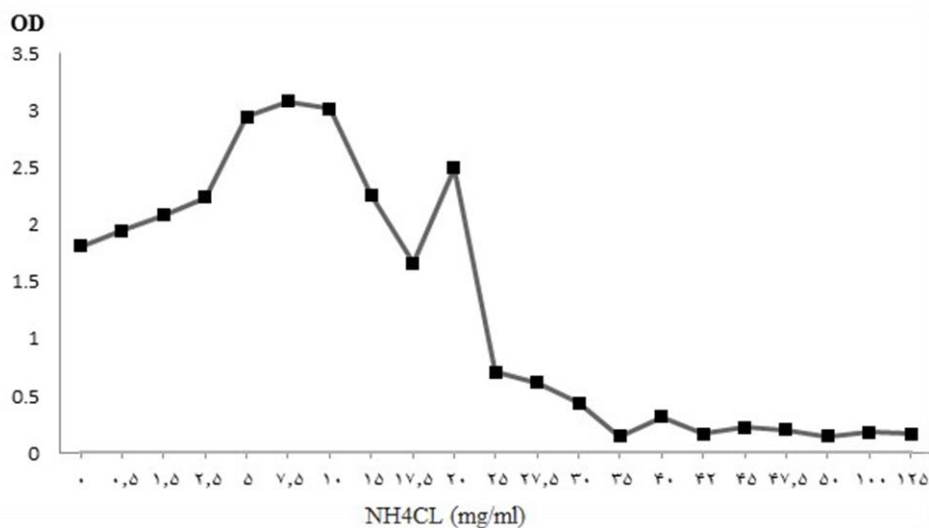


Figure 1. NH₄CL effects on OD while the concentrations of other salts waswere unchanged

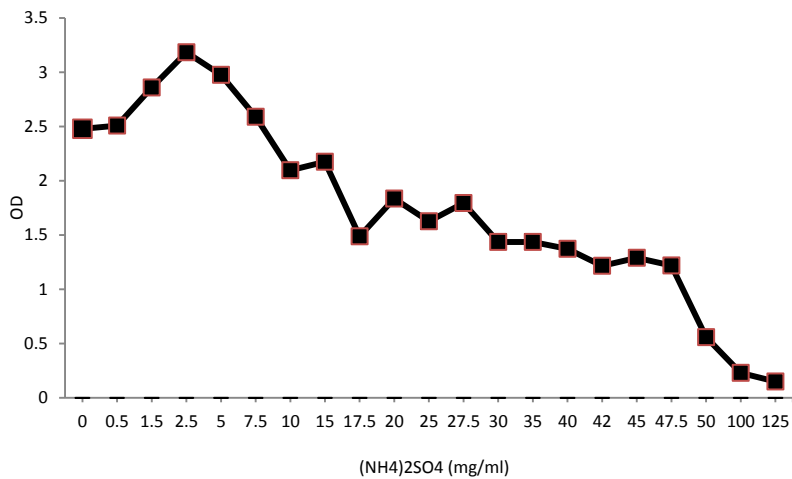


Figure 2. (NH4)2SO4 effects on OD while the concentrations of other salts were unchanged

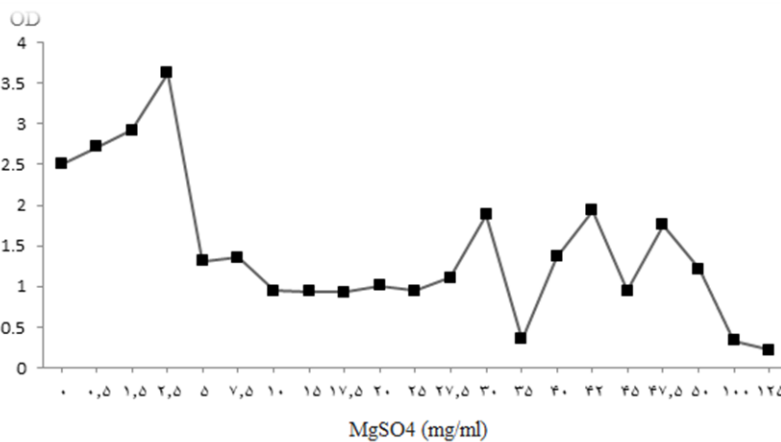


Figure 3. MgSO4 effects on OD while the concentrations of other salts waswere unchanged

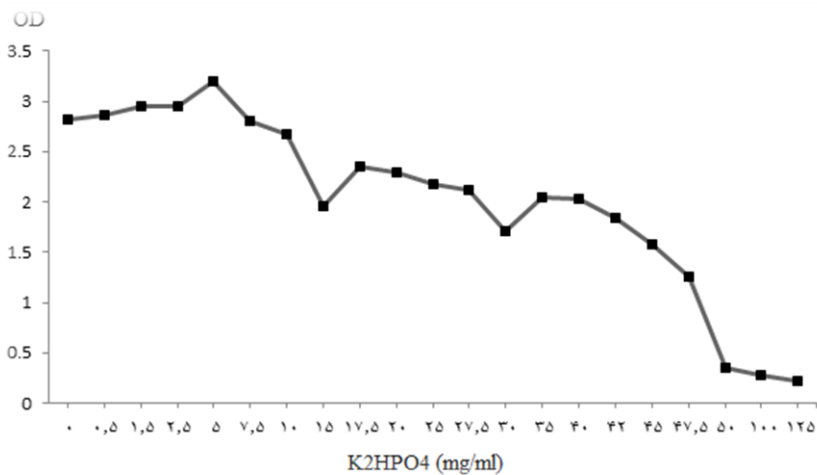


Figure 4. K2HPO4 effects on OD while the concentrations of other salts were unchanged

Discussion

Recently, artificial neural network as a powerful tool used for modeling particularly for experiments that variables don't have a direct relationship with each other.^{27,28} Recombinant protein production costs are high. The manufacturing process must be optimized. One of the key components for achieving this goal is the medium. Achieving the high cell density for production of recombinant proteins is most important way to obtain the large amount of protein. There are many ways to reach this purpose. One of these methods is the change in the composition of the culture medium. For optimization, the evaluation of effect of each variables is difficult and expensive work. Therefore, the use of artificial neural network modeling is very helpful.²⁹

Due to the rapid growth, low cost medium, and cost-effectiveness *E. coli*, it is widely used in the production of recombinant proteins.³⁰ In general, the components of the culture medium is containing a carbon source and salt and trace nutrients. The amount of glucose, carbon, required for proper cell density was evaluated in a different articles.³¹ The amount of salt to achieve high cell density was optimized in batch culture. After adding salt, PH medium was adjusted between 5 and 8 as an important and impressive factor in the procedure.^{32,33} Increasing the concentration of (NH₄)₂SO₄ and

NH₄CL resulted in less effect of concentration of K₂HPO₄ on cell density. Because PH of culture medium is unfavorable for *E.coli* growth. While MgSO₄ effect is obvious when total concentration salt is lower 120 mg/ml. As well as, the MgSO₄ effect clearly seen on increasing cell density when the K₂HPO₄ and NH₄CL concentration is low. Unlike the other salts, when concentration of MgSO₄ increases, at some points the cell density changes (shown in Figure 3). In fact, mg²⁺ uptake affected by enzyme activity such as RNA polymerase that is proportional with the growth of bacteria.^{34,35} But, because of the limited number of other nutrients, there is no a significant change in high cell density.

Reducing the time and cost, and improvement of efficiency are most essential requirements in biotechnology industry. In this study, the (NH₄)₂SO₄ effect was slight on the cell density and data showed that total concentration salt more than 120 mg/ml have inhibitory effect on BL21 growth. An amount of 25-30 mg/ml is optimum concentration to reach high cell density. However, for gathering more accurate and more comprehensive information, other factors such as aeration should be studied at the same time. Also, it should be considered that due to the complexity of metabolic system and large number of physical and chemical factors affecting on growth, creating a powerful and convenient model to predict productivity is difficult.

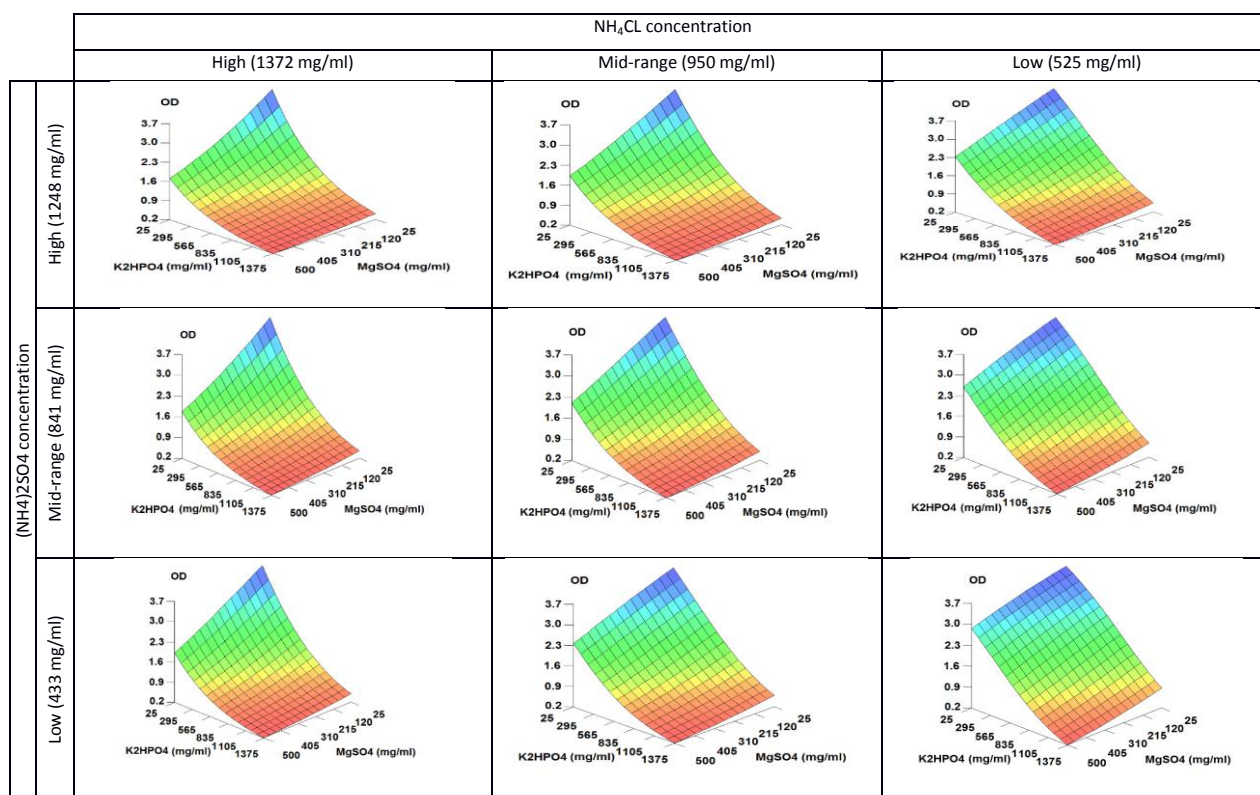


Figure 5. 3-D plots of OD predicted by the ANNs at fixed low, mid-range, and high values for NH₄CL and (NH₄)₂SO₄ concentrations

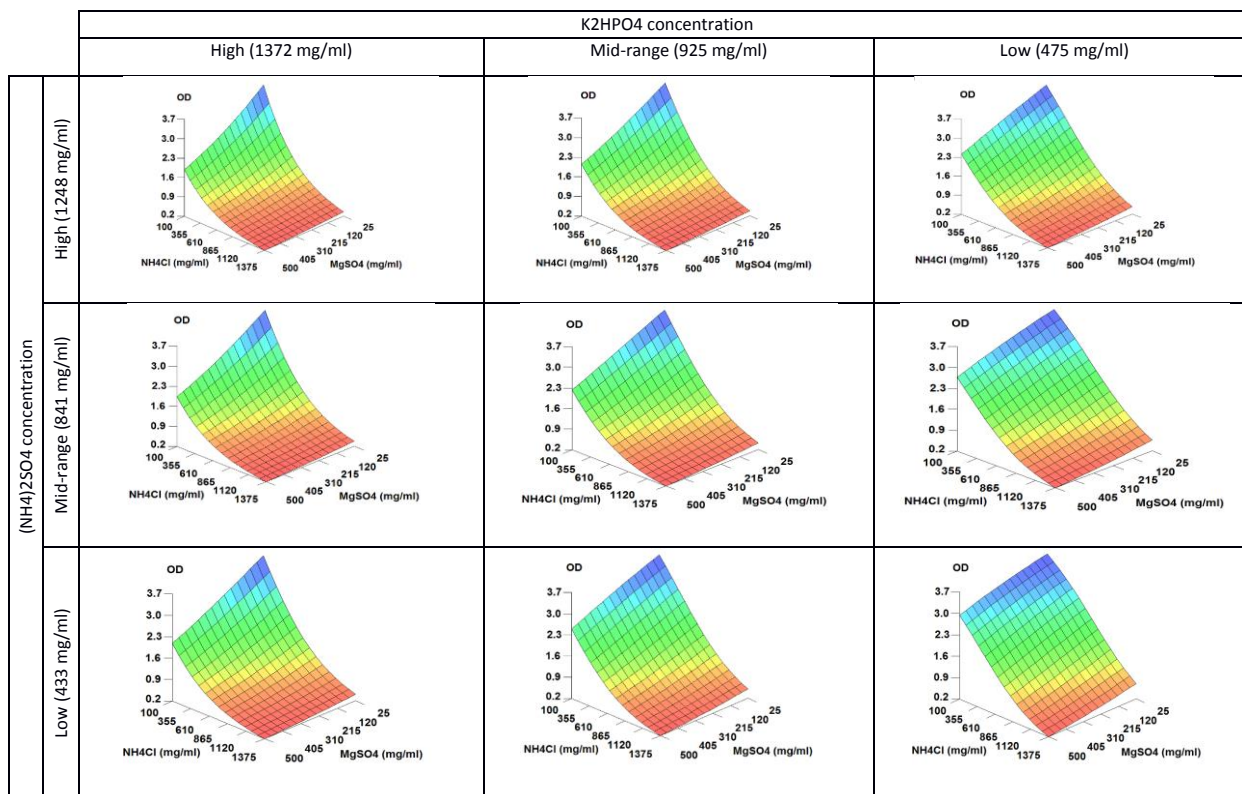


Figure 6. 3-D plots of OD predicted by the ANN model at fixed low, mid-range, and high values of K2HPO4 and (NH4)2SO4 concentrations

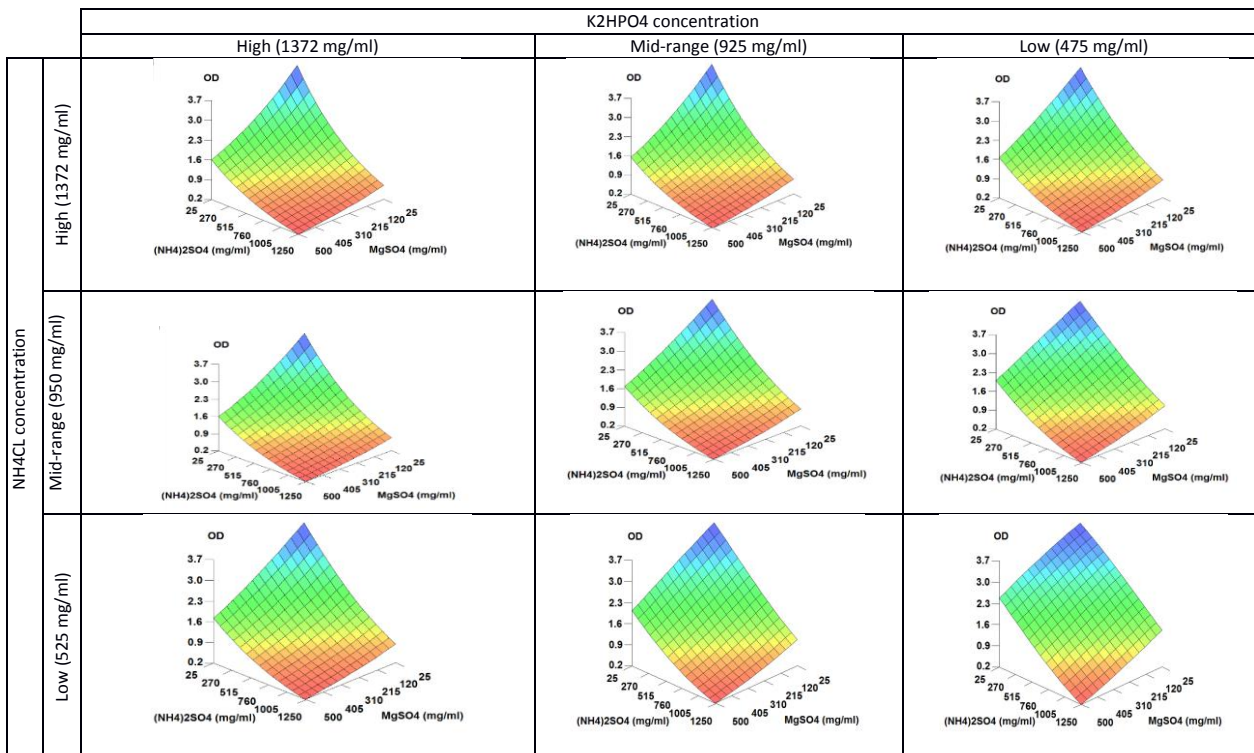


Figure 7. 3-D plots of OD predicted by the ANN model at fixed low, mid-range, and high values of the K2HPO4 and NH4Cl concentrations

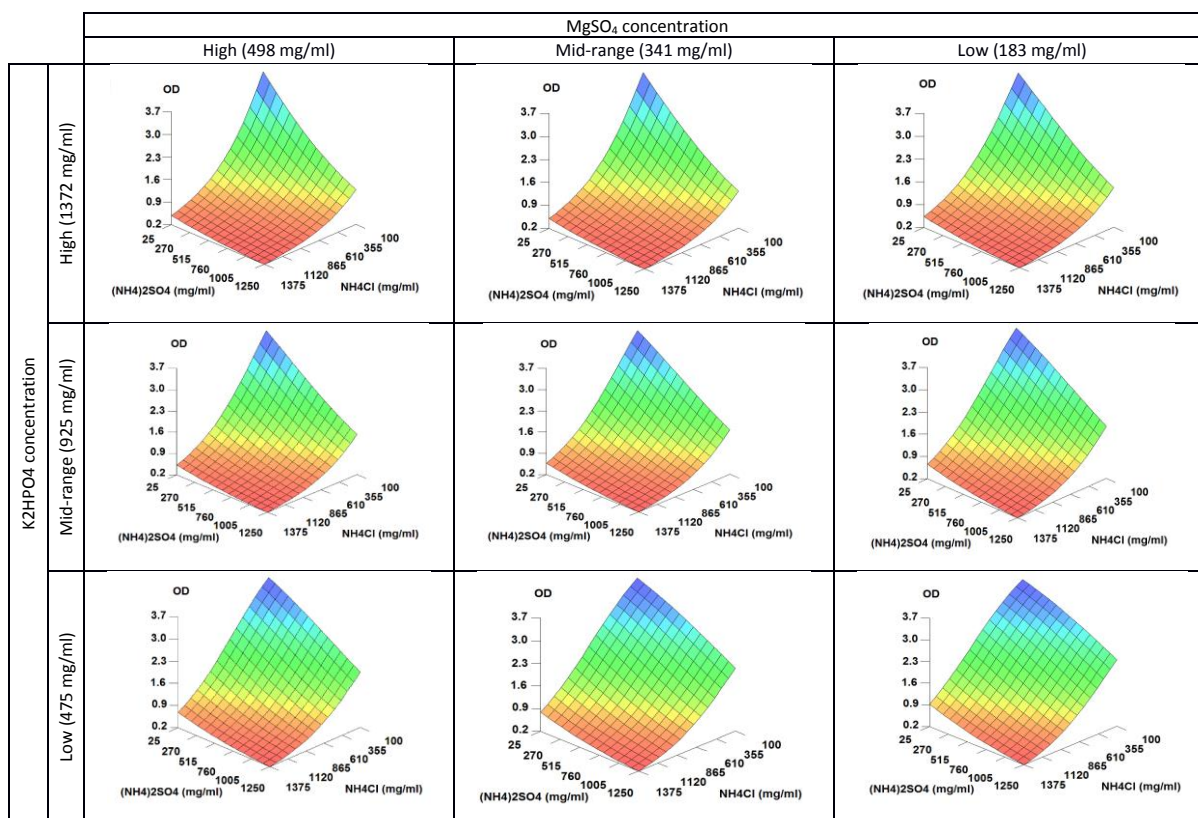


Figure 8. 3-D plots of OD predicted by the ANN model at fixed low, mid-range, and high values of the MgSO₄ and K₂HPO₄ concentrations

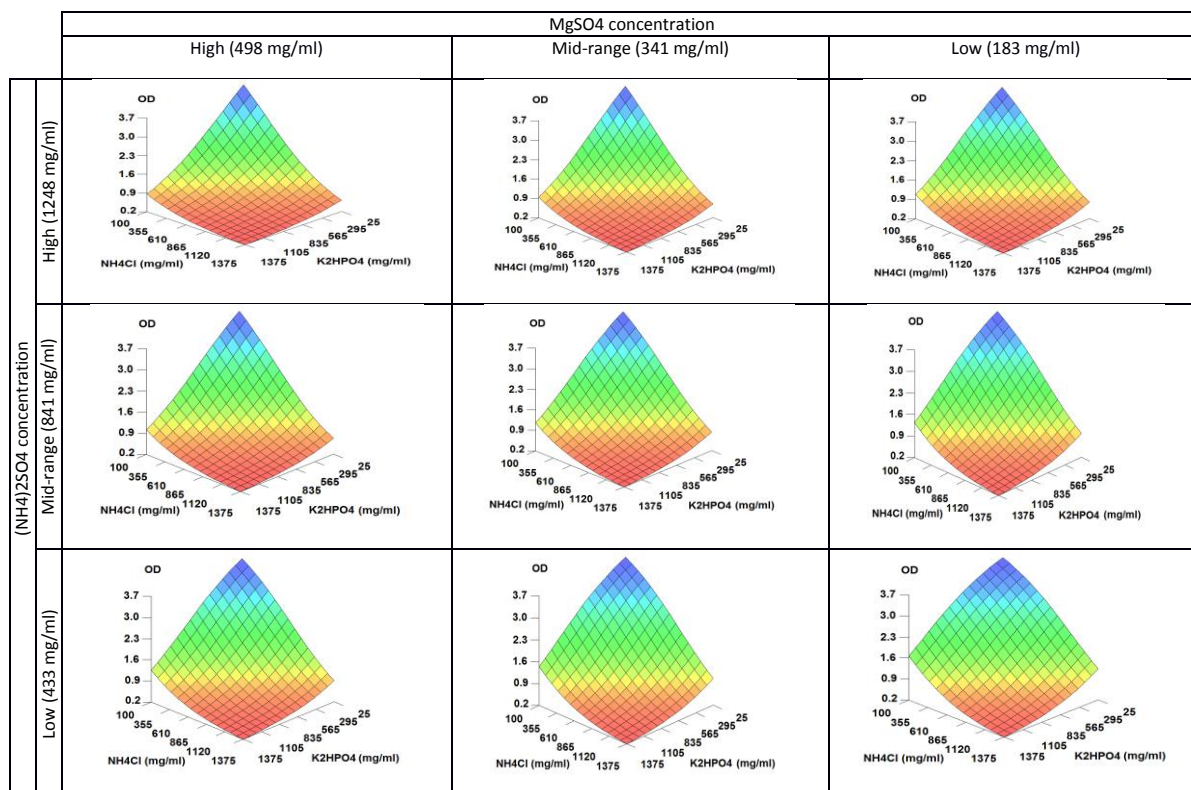


Figure 9. 3-D plots of OD predicted by the ANN model at fixed low, mid-range, and high values of the MgSO₄ and (NH₄)₂SO₄ concentrations

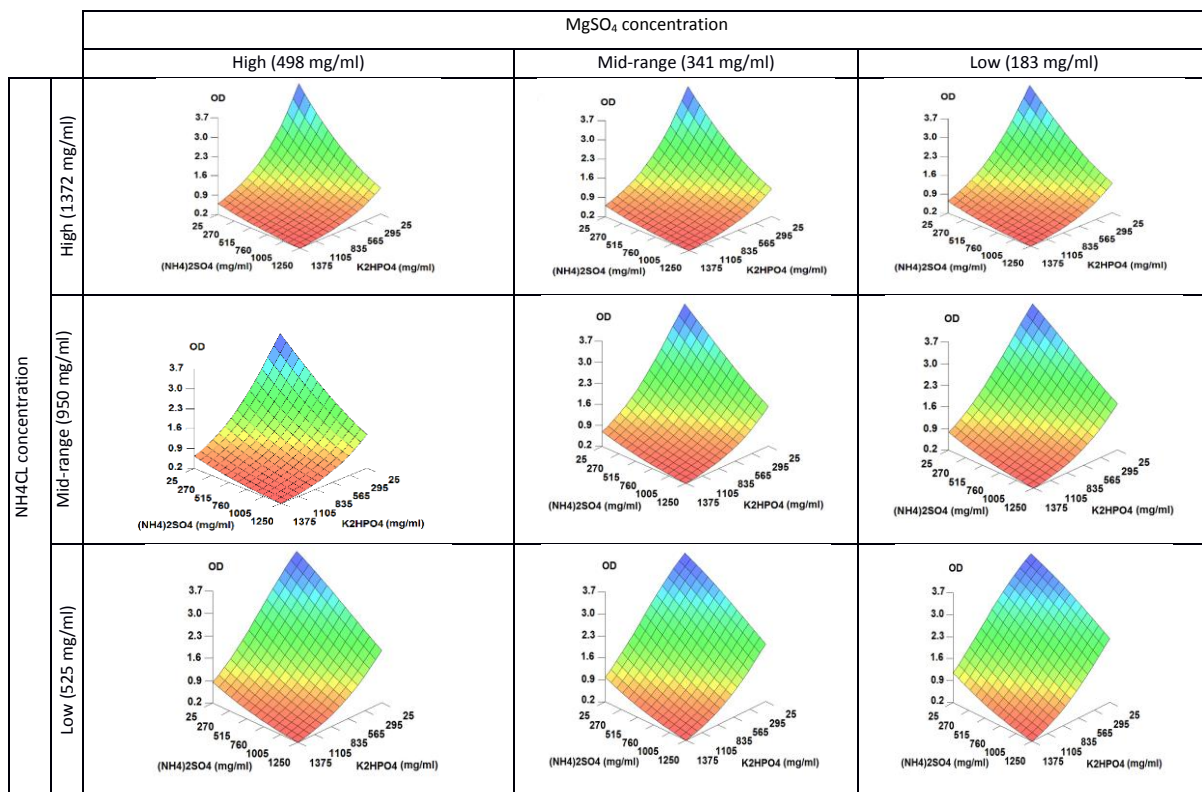


Figure 10. 3-D plots of OD predicted by the ANN model at fixed low, mid-range, and high values of the $MgSO_4$ and NH_4Cl concentrations

Acknowledgement

This study was supported by the vice-chancellor of research at Bushehr University of Medical Sciences & Health Services grant no. 20-18-3-46334.

Conflict of Interest

The authors declare that they have no conflicts of interest to disclose.

References

- Rosano GL, Ceccarelli EA. Recombinant protein expression in *Escherichia coli*: advances and challenges. *Front Microbiol* 2014;5:1-17. doi:10.3389/fmicb.2014.00172
- Palomares LA, Kuri-Breña F, Ramírez OT. Industrial recombinant protein production. *EOLSS* 2002.
- Gräslund S, Nordlund P, Weigelt J, Bray J, Gileadi O, Knapp S, et al. Protein production and purification. *Nat Methods* 2008;5:135-46. doi:10.1038/nmeth.f.202
- Waegeman H, Soetaert W. Increasing recombinant protein production in *Escherichia coli* through metabolic and genetic engineering. *J Ind Microbiol Biotechnol* 2011;38:1891-910. doi:10.1007/s10295-011-1034-4
- Joseph BC, Pichaimuthu S, Srimeenakshi S, Murthy M, Selvakumar K, Ganesan M, et al. An overview of the parameters for recombinant protein expression in *Escherichia coli*. *Science & Therapy* 2015;6:1-7. doi:0.4172/2157-7013.1000221
- Demain AL, Vaishnav P. Production of recombinant proteins by microbes and higher organisms. *Biotechnol Adv* 2009;27:297-306. doi:10.1016/j.biotechadv.2009.01.008
- Ferrer-Miralles N, Domingo-Espín J, Corchero JL, Vázquez E, Villaverde A. Microbial factories for recombinant pharmaceuticals. *Microb cell fact* 2009;8:1-8. doi:10.1186/1475-2859-8-17
- Huang CJ, Lin H, Yang X. Industrial production of recombinant therapeutics in *Escherichia coli* and its recent advancements. *J Ind Microbiol Biotechnol* 2012;39:383-99. doi:10.1007/s10295-011-1082-9
- Choi JH, Keum KC, Lee SY. Production of recombinant proteins by high cell density culture of *Escherichia coli*. *Chemical Engineering Science*. 2006;61:876-85.
- Graumann K, Premstaller A. Manufacturing of recombinant therapeutic proteins in microbial systems. *Biotechnol J* 2006;1:164-86.
- Shiloach J, Fass R, Growing E. coli to high cell density—a historical perspective on method development. *Biotechnol Adv* 2005;23:345-57. doi:10.1016/j.biotechadv.2005.04.004
- Ng W, Ting YP. Development of a semi-defined medium for high cell density cultivation of *Escherichia coli* in shake flask culture system: Part I. *PeerJ PrePrints* 2015:1-2
- Shojaosadati SA, Varedi Kolaei SM, Babaeipour V, Farnoud AM. Recent advances in high cell density cultivation for production of recombinant protein. *Iranian Journal of Biotechnology* 2008;6:63-84.
- Tapia F, Vázquez-Ramírez D, Genzel Y, Reichl U. Bioreactors for high cell density and continuous multi-stage cultivations: options for process intensification in cell culture-based viral vaccine production. *Appl Microbiol Biotechnol* 2016;100:2121-32. doi:10.1007/s00253-015-7267-9
- Sivashanmugam A, Murray V, Cui C, Zhang Y, Wang J, Li Q. Practical protocols for production of very high yields of recombinant proteins using *Escherichia coli*. *Protein Sci* 2009;18:936-48. doi:10.1002/pro.102
- Nagata Y, Chu KH. Optimization of a fermentation medium using neural networks and genetic algorithms. *Biotechnol Lett* 2003;25:1837-42.
- Franco-Lara E, Link H, Weuster-Botz D. Evaluation of artificial neural networks for modelling and optimization of medium composition with a genetic algorithm. *Process Biochemistry* 2006;41:2200-6. doi:10.1016/j.procbio.2006.06.024
- Aichouri I, Hani A, Bougherira N, Djabri L, Chaffai H, Lallahem S. River flow model using artificial neural networks. *Energy Procedia* 2015;74:1007-14. doi:10.1016/j.egypro.2015.07.832
- Aghajani MH, Pashazadeh AM, Mostafavi SH, Abbasi S, Hajibagheri-Fard MJ, Assadi M, et al. Size Control in the Nanoprecipitation Process of Stable Iodine (I_2^*) Using Microchannel Reactor—Optimization by Artificial Neural Networks. *AAPS PharmSciTech* 2015;16:1059-68. doi:10.1208/s12249-015-0293-1

20. Mostafavi SH, Aghajani M, Amani A, Darvishi B, Noori Koopaei M, Pashazadeh AM, et al. Optimization of paclitaxel-loaded poly (d, l-lactide-co-glycolide-N-p-maleimido benzoic hydrazide) nanoparticles size using artificial neural networks. *Pharm Dev Technol* 2014;20:1-9. doi:10.3109/10837450.2014.930487
21. Amani A, York P, Chrystyn H, Clark BJ, Do DQ. Determination of factors controlling the particle size in nanoemulsions using Artificial Neural Networks. *Eur J Pharm Sci* 2008;35:42-51. doi:10.1016/j.ejps.2008.06.002
22. Shao Q, Rowe RC, York P. Comparison of neurofuzzy logic and neural networks in modelling experimental data of an immediate release tablet formulation. *Eur J Pharm Sci* 2006;28:394-404. doi:10.1016/j.ejps.2006.04.007
23. Ali HS, Blagden N, York P, Amani A, Brook T. Artificial neural networks modelling the prednisolone nanoprecipitation in microfluidic reactors. *Eur J Pharm Sci* 2009;37:514-22. doi:10.1016/j.ejps.2009.04.007
24. Aghajani M, Shahverdi AR, Amani A. The use of artificial neural networks for optimizing polydispersity index (PDI) in nanoprecipitation process of acetaminophen in microfluidic devices. *AAPS PharmSciTech* 2012;13:1293-301. doi:10.1208/s12249-012-9859-3
25. Olden JD, Jackson DA. Illuminating the "black box": a randomization approach for understanding variable contributions in artificial neural networks. *Ecological modelling* 2002;154:135-50. doi:10.1016/S0304-3800(02)00064-9
26. Aghajani M, Shahverdi AR, Rezayat SM, Amini MA, Amani A. Preparation and optimization of acetaminophen nanosuspension through nanoprecipitation using microfluidic devices: an artificial neural networks study. *Pharm Dev Technol* 2013;18:609-18. doi:10.3109/10837450.2011.649854
27. Desai KM, Akolkar SK, Badhe YP, Tambe SS, Lele S. Optimization of fermentation media for exopolysaccharide production from *Lactobacillus plantarum* using artificial intelligence-based techniques. *Process Biochemistry* 2006;41:1842-8. doi:10.1016/j.procbio.2006.03.037
28. Desai KM, Survase SA, Saudagar PS, Lele SS, Singhal RS. Comparison of artificial neural network (ANN) and response surface methodology (RSM) in fermentation media optimization: case study of fermentative production of scleroglucan. *Biochemical Engineering Journal* 2008;41:266-73. doi:10.1016/j.bej.2008.05.009
29. Survase SA, Saudagar PS, Singhal RS. Production of scleroglucan from *Sclerotium rolfsii* MTCC 2156. *Bioresour Technol* 2006;97:989-93. doi:10.1016/j.biortech.2005.04.037
30. Aune TEV. High level recombinant protein production in *Escherichia coli* by engineering broad-host-range plasmid vectors containing the Pm/xyIS expression cassette. *NTNU Open* 2008.
31. Poccia ME, Beccaria AJ, Dondo RG. Modeling the microbial growth of two *Escherichia coli* strains in a multi-substrate environment. *Brazilian Journal of Chemical Engineering* 2014;31:347-54. doi:10.1590/0104-6632.20140312s00002587
32. Rosso L, Lobry JR, Bajard S, Flandrois JP. Convenient Model To Describe the Combined Effects of Temperature and pH on Microbial Growth. *Applied and environmental microbiology* 1995;61:610-6.
33. Gale EF, Epps HM. The effect of the pH of the medium during growth on the enzymic activities of bacteria (*Escherichia coli* and *Micrococcus lysodeikticus*) and the biological significance of the changes produced. *Biochem J* 1942;36:600-18.
34. Yegane-Sarkandy S, Farnoud A, Shojaosadati S, Khalilzadeh R, Sadeghyzadeh M, Ranjbar B, et al. Overproduction of human interleukin-2 in recombinant *Escherichia coli* BL21 high-cell-density culture by the determination and optimization of essential amino acids using a simple stoichiometric model. *Biotechnol Appl Biochem* 2009;54:31-9. doi:10.1042/BA20080300
35. Babaeipour V, Shojaosadati SA, Robotjazi SM, Khalilzadeh R, Maghsoudi N. Over-production of human interferon- γ by HCDC of recombinant *Escherichia coli*. *Process Biochemistry* 2007;42:112-7. doi:10.1016/j.procbio.2006.07.009